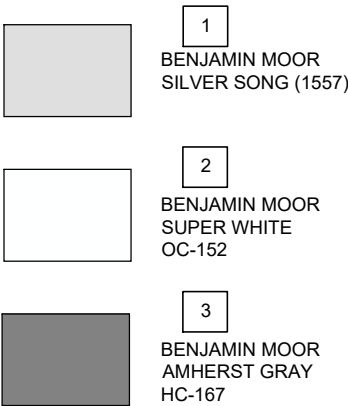




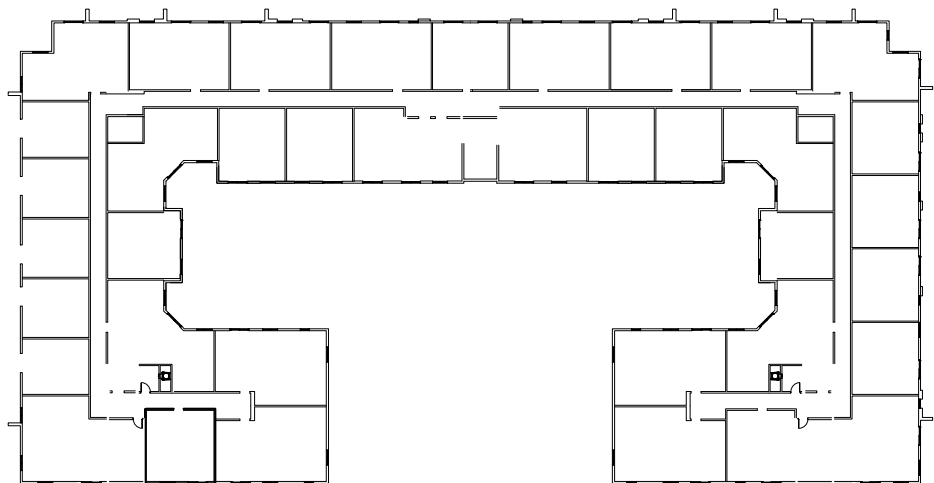
EAST ELEVATION

SCALE: 1"= 3/32"

COLOR PALETTE



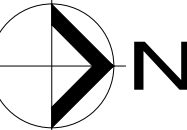
MATERIAL LEGEND	
KEY VALUE	KEYNOTE DESCRIPTION
01	MASONRY: CMU/CONCRETE SUBSTRATE W/SMOOTH STUCCO FINISH. HIGH BUILD, ACRYLIC WATERPROOFING COATING (THOROCOAT BY BASF BUILDING SYSTEMS, OR ACCEPTABLE EQUIVALENT). COLOR PAINT TO BE SELECTED BY ARCHITECT.
02	ALUMINUM SLIDING GLASS DOOR ASSEMBLY - W/ LAMINATED TINTED GLASS W/ A HIGH PERFORMANCE COATING; TO MEET WIND LOAD REQUIREMENTS
03	ALUMINUM WINDOW ASSEMBLY - W/LAMINATED TINTED GLASS W/ A HIGH PERFORMANCE COATING; TO MEET WIND LOAD REQUIREMENTS. PROVIDE SAMPLES TO ARCHITECT FOR REVIEW.
04	ALUMINUM STOREFRONT ASSEMBLY FOR NON-RESIDENTIAL AREA. LAMINATED TINTED GLASS W/ A HIGH PERFORMANCE COATING; TO MEET WIND LOAD REQUIREMENTS. 75% MIN. LIGHT TRANSMITTANCE, MAX. 15% REFLECTANCE. PROVIDE SAMPLES TO ARCHITECT FOR REVIEW.
05	CONCRETE SCORE LINES AT FACADE WALLS
06	42" A.F.F. RAILING ENCLOSURE AT BALCONY & TERRACE
07	ROOF PARAPET
08	ACCESSIBLE RAMP 1:12 MAX.
09	MOTORIZED OVERHEAD COILING DOOR TO MEET WIND LOAD REQUIREMENTS
10	EXTERIOR STAIR AS PEDESTRIAN ACCESS TO BUILDING
11	ARCHITECTURAL FRAME
12	CONCRETE EYEBROW SLAB
13	ALUMINUM STOREFRONT ASSEMBLY FOR RESIDENTIAL AREA. LAMINATED TINTED GLASS W/ A HIGH PERFORMANCE COATING; TO MEET WIND LOAD REQUIREMENTS. 75% MIN. LIGHT TRANSMITTANCE, MAX. 15% REFLECTANCE. GLASS MUST NOT BE MIRRORED. PROVIDE SAMPLES TO ARCHITECT FOR REVIEW.



EAST ELEVATION

KEY PLAN

SCALE: 1/64"= 20'



PROJECT No.:	REV. #	DATE
DESIGNED BY: O.M.	1	
DRAWN BY: 4	2	
CHECKED BY: O.M.	3	
ISSUE DATE: 09-01-2022	4	
DRAWING SCALE: AS SHOWN	5	
	6	
	7	
	8	
	9	
	10	

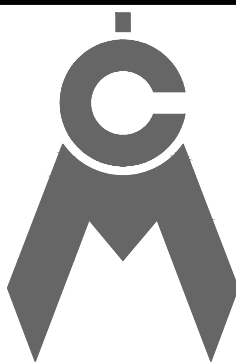
208 NORTH FEDERAL HWY
POMPAÑO BEACH, FL. 33062

AAC

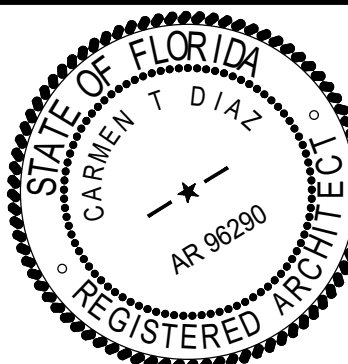
PZ21-12000041

06/06/2023

CAYMARES MARTIN
Architectural & Engineering Design
AA 26001552 CA 27136
5001 SW 74th Ct, Ste 100
Miami, FL 33155
Ph: (305) 669-5040 Fax:
(305) 669-5041
www.caymartindesign.com



ARCH. CARMEN T. DIAZ
LIC # AR 96290
5001 SW 74th COURT
SUITE 100
MIAMI, FL 33155
TEL (305) 669-5040
FAX (305) 669-5041



SHEET No:

A-3.2.1